

Gated Pulse Frequency Generator

Updates to this analysis will continue as more experimental evidence becomes available (12-27-2022). Please note that initial diagrams/photos may change accordingly.

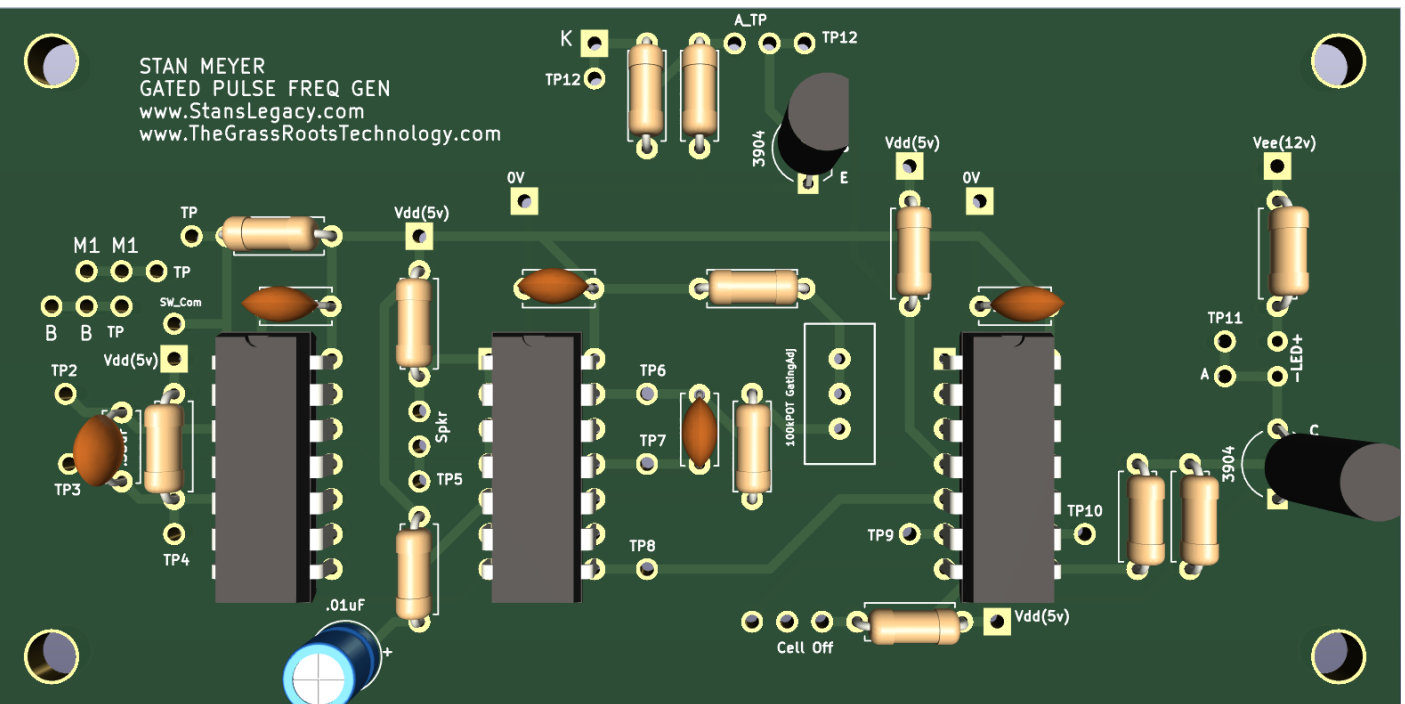
The Gated Pulse Frequency Generator (GPFG) is not located on the VIC circuit board. It is located within the Gas Management System (GMS) unit. However, it does interface with the VIC circuit boards.

GMS UNIT LOCATION:

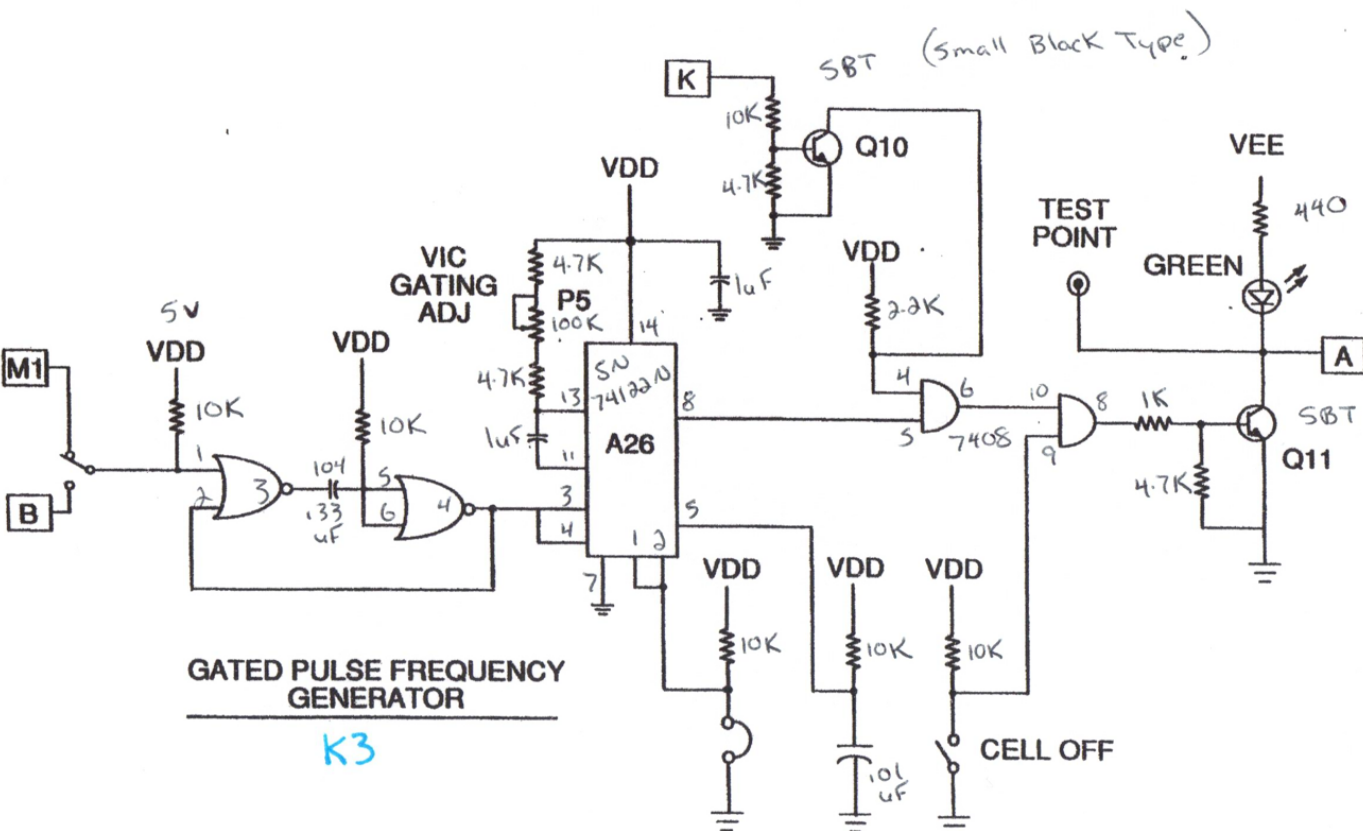


REPLICA PCB FOR TESTING:

PCB replica is 95% identical to patent schematic. Differences lie in the addition of decoupling capacitors across IC voltage supply to make ICs behave more stable.



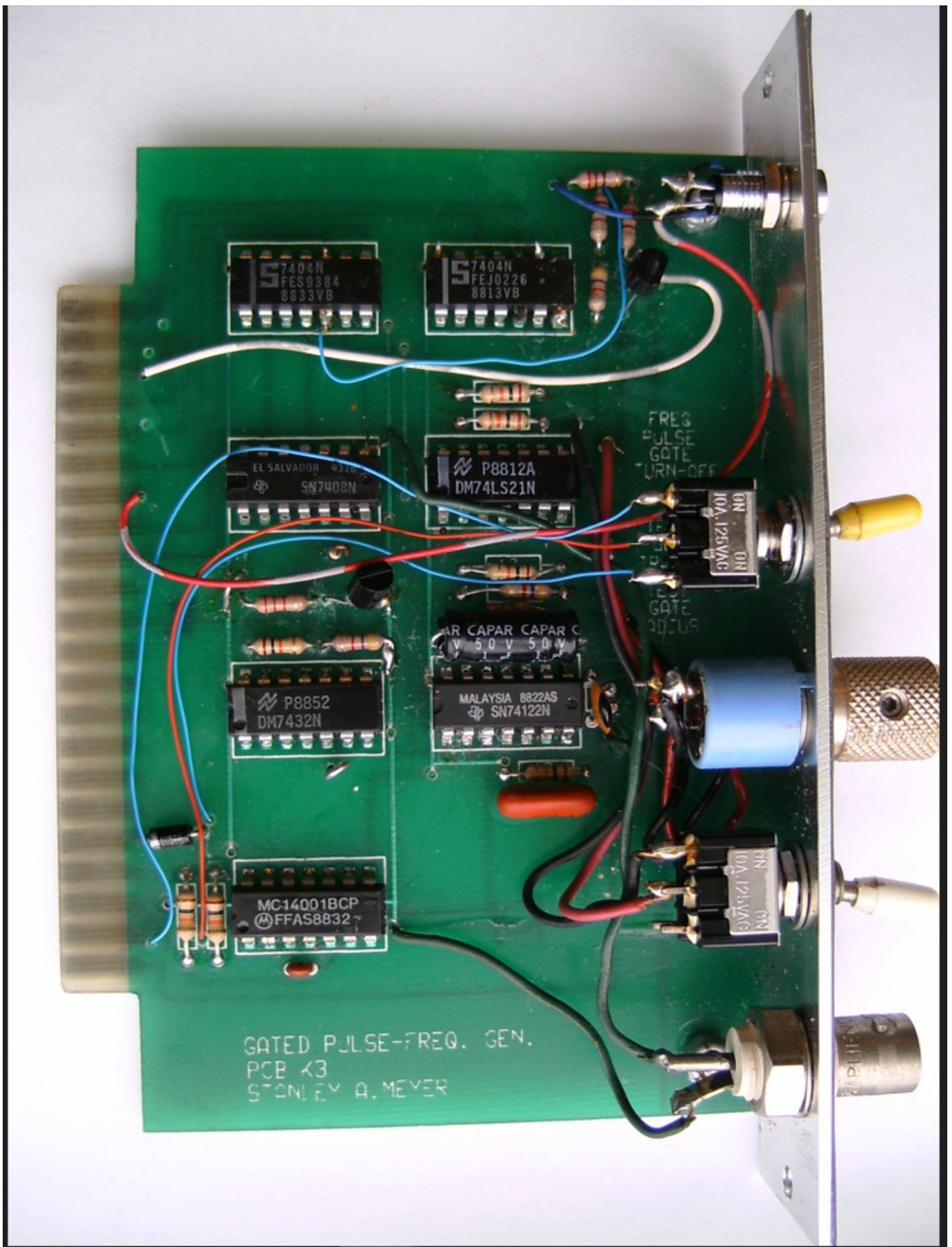
PATENT SCHEMATIC:



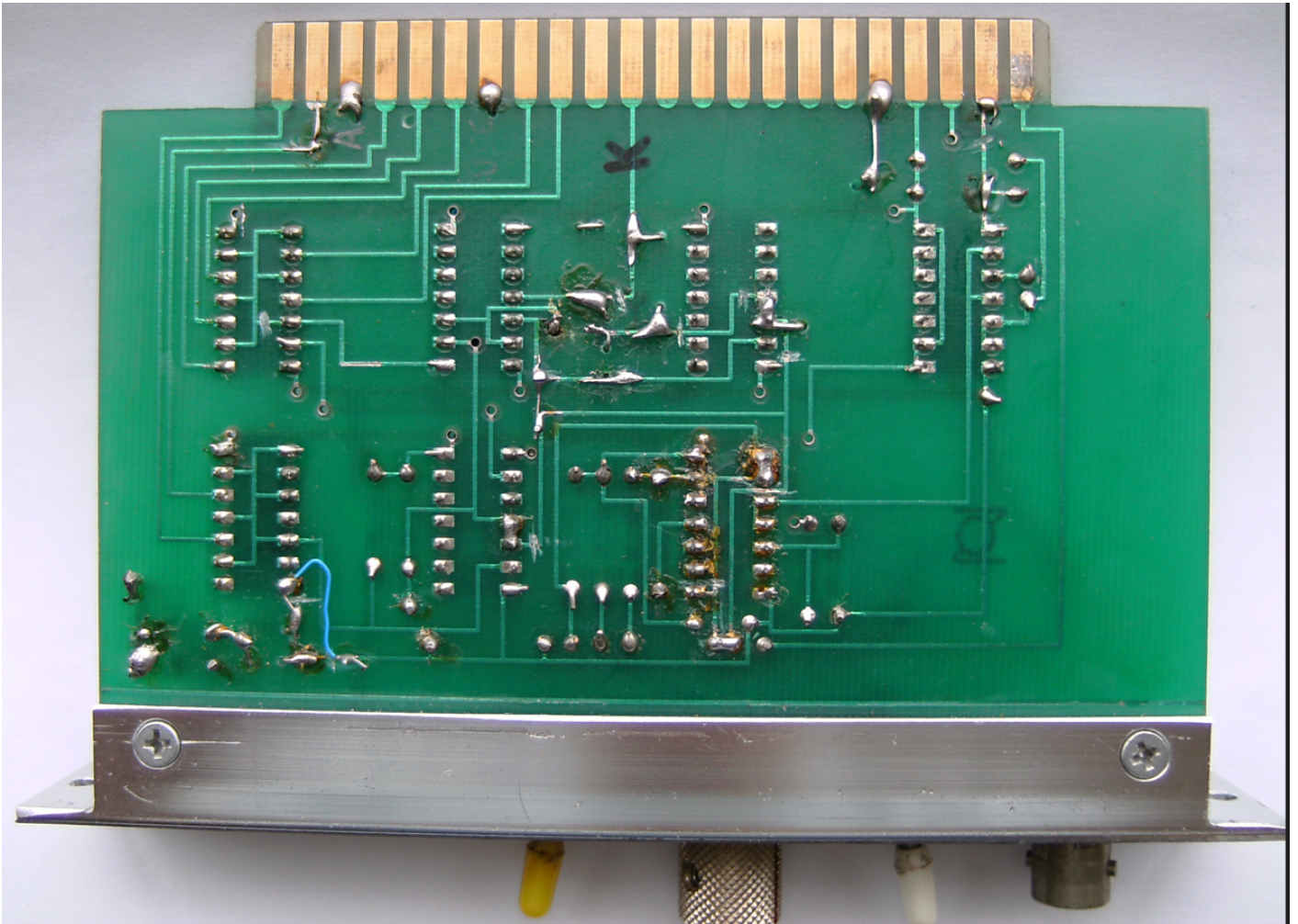
ORIGINAL CIRCUIT BOARD INTERFACE PLATE:



ORIGINAL CIRCUIT BOARD FRONT:



ORIGINAL CIRCUIT BOARD BACK:



Revision #1

Created 3 April 2023 16:49:32 by Admin

Updated 3 April 2023 16:49:33 by Admin