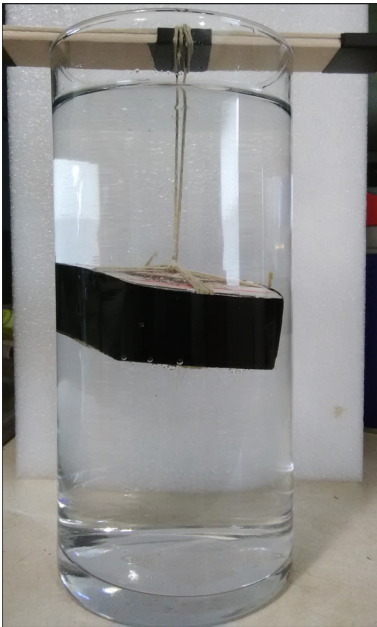


N42 2"x2"x1" NdFeB

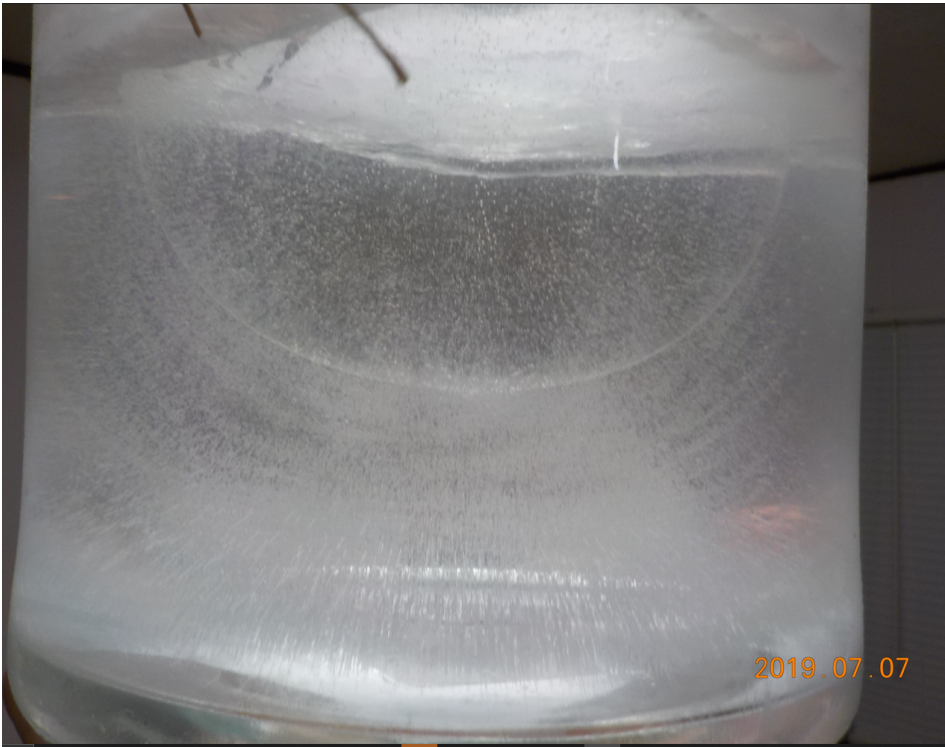
N42 strength magnet was utilized. Gauss measurements at pole surface were:

DANGER: NEODYMIUM MAGNETS ARE VERY DANGEROUS! INCREDIBLY STRONG, AND UNFORGIVING. THE FOLLOWING IS FOR INFORMATIONAL PURPOSES ONLY AND SHOULD NOT BE SEEN AS AN INCENTIVE, OR RECOMMENDATION TO DO YOURSELF.

Magnet was suspended in glass cylinder with distilled water. Placed into a deep freezer. South pole facing down, North pole facing upwards.



Below is a photo showing what looks like "shells" of magnetic field lines. Can also see a vortex shaped geometry forming at the bottom.



Top of the magnet body has a wispy formation, with egg bottom like geometry



Below photo is of the frozen water out of the cylinder. Illuminating was provided from underneath by pen light. Vortex like geometry can be seen clearly.



Revision #1

Created 26 January 2023 18:40:52 by Admin

Updated 23 July 2023 02:27:21 by Admin